

## PUMP STROKE COUNTER (PSC3)



ELECTRO-FLOW  
CONTROLS



- **MAINS OPERATED**
- **NO BATTERY CHANGE OUT OR MAINTENANCE**
- **STAINLESS STEEL ENCLOSURE, 316L**
- **1, 2, 3 OR MORE PUMPS**
- **TOTAL STROKES**
- **LARGE, CLEAR. BACKLIT LCD DISPLAY**

### *Typical Pump Stroke Counter*

- Includes ATEX Certification and Document Pack
- Simultaneous display of SPM 1, 2, 3 and Total Strokes
- SPM select switch not required, but is available as option
- Bright, high visibility read out



DESIGNED & CONSTRUCTED  
TO OPERATE IN ZONE 1 AREAS





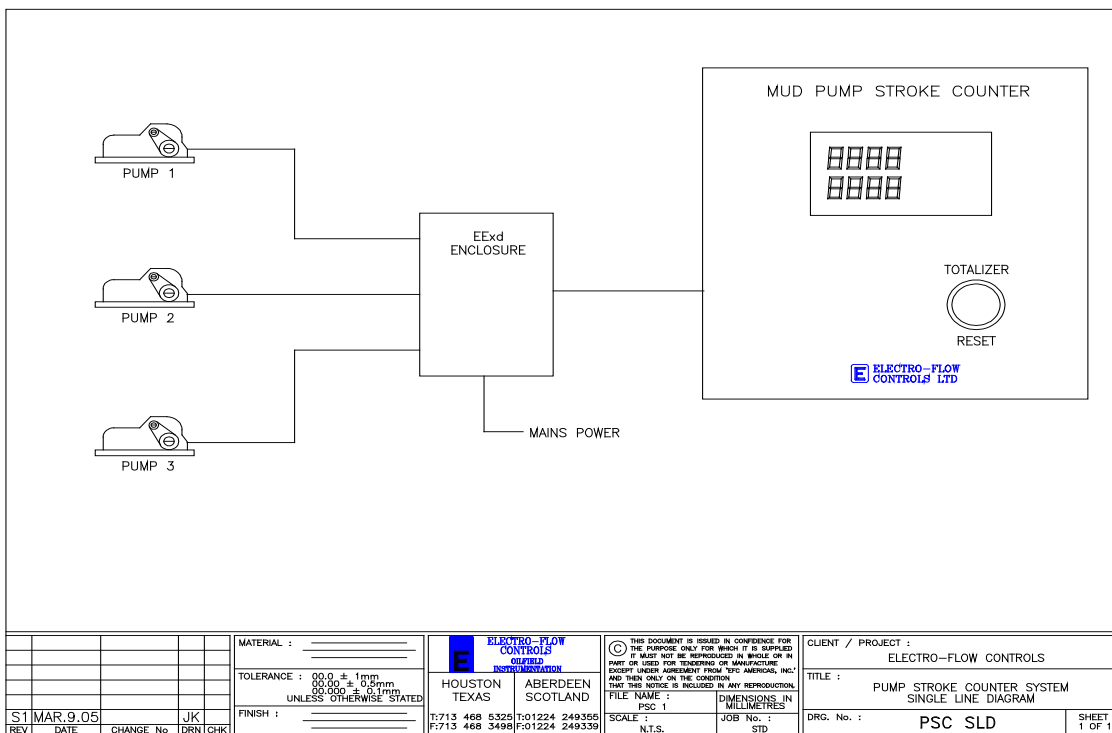
# PUMP STROKE COUNTER (PSC3)

EFC's Pump Stroke Counter (PSC) can be provided as a stand-alone unit or incorporated into a choke control or drilling instrumentation system. PSC display can be fitted to standardised choke control cut outs, or customised to suit.

The PSC is designed for 1, 2, 3 or more mud pumps, it displays SPM 1, 2 & 3 and Total Strokes simultaneously and includes a Reset button. The system is constructed from Intrinsically Safe ATEX certified components and is suitable for use within a Zone 1 hazardous area.

A Typical Pump Stroke Counter includes:

- Stainless Steel Display Enclosure
- EExd Processing Enclosure
- Proximity Switch Sensor Assemblies



### ELECTRO-FLOW CONTROLS LTD

Block1 Unit 3  
Souterhead Road  
Altens  
Aberdeen AB12 3LF Scotland UK  
Telephone (+44) 01224 249355  
Fax (+44) 01224 249339  
Email [info@electroflowcontrols.com](mailto:info@electroflowcontrols.com)

### ELECTRO-FLOW CONTROLS

1424 West Sam Houston Parkway North  
Suite 140  
Houston  
Texas 77043 USA  
Telephone (+1) 713 468 5325  
Fax (+1) 713 468 3498  
Email [info@electroflowcontrols.com](mailto:info@electroflowcontrols.com)

